

10 Riverpark Way, Horsley, NSW 2530

Sold - \$399,000

House 3  2  2 



SOLD

NOW SOLD

SALE NEGOTIATED FIRST WEEK ON THE MARKET!

Impeccably presented family home or investment situated in a well kept quiet culdesac. Enviably styled open plan interior features a formal living and dining with floating flooring.

Warm and inviting master bedroom offering both an ensuite and walk-in wardrobe.

Child friendly level rear yard with part covered outdoor entertainment and barbeque area.

Double garage with internal access plus easy potential for side yard access compliments

For further information, please contact Simon Scholtens of Scholtens Property on 02 4225 7010 or 0418 689 609

www.scholtensproperty.com - Premium Property Marketing

www.facebook.com/realestateillawarra

Open for Inspection

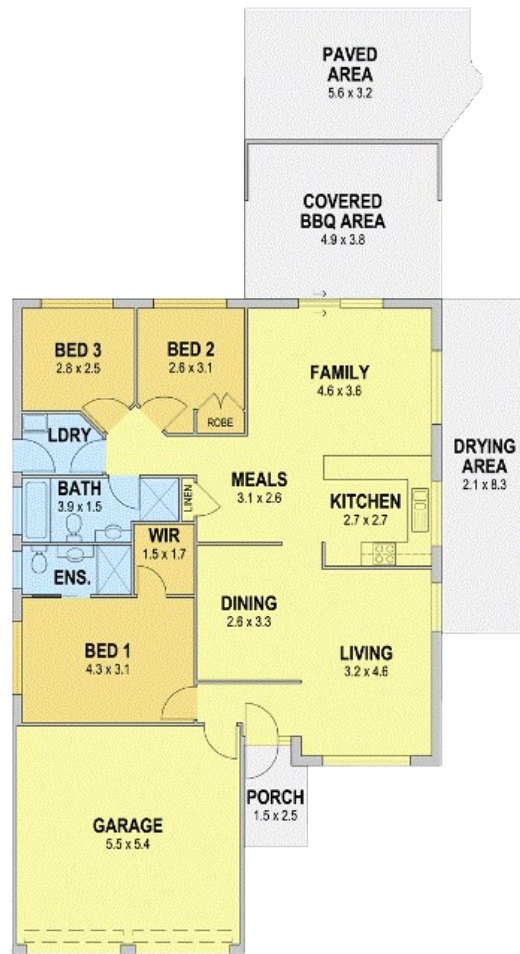
By Appointment.

Listed By

Simon Scholtens
Phone: (02) 4225 7010
Mobile: 0418 689 609



Floorplan



10 Riverpark Way, Horsley, NSW

Residence Area: 219m² (approx.)
Internal Living Area: 138m² (approx.)



Disclaimer: Design Justice Group Pty Ltd has prepared this document for the use of the Real Estate Products Group Pty Ltd clients and has not undertaken to ensure that the information contained in this document is true and accurate, for any purpose other than that intended. All liability in respect of any errors, omissions, inaccuracies or misstatements contained in this document, if any, shall remain with the client. The Real Estate Products Group Pty Ltd does not warrant the accuracy of the information contained in this document. The Real Estate Products Group Pty Ltd does not warrant the accuracy of the information contained in this document. The Real Estate Products Group Pty Ltd does not warrant the accuracy of the information contained in this document.