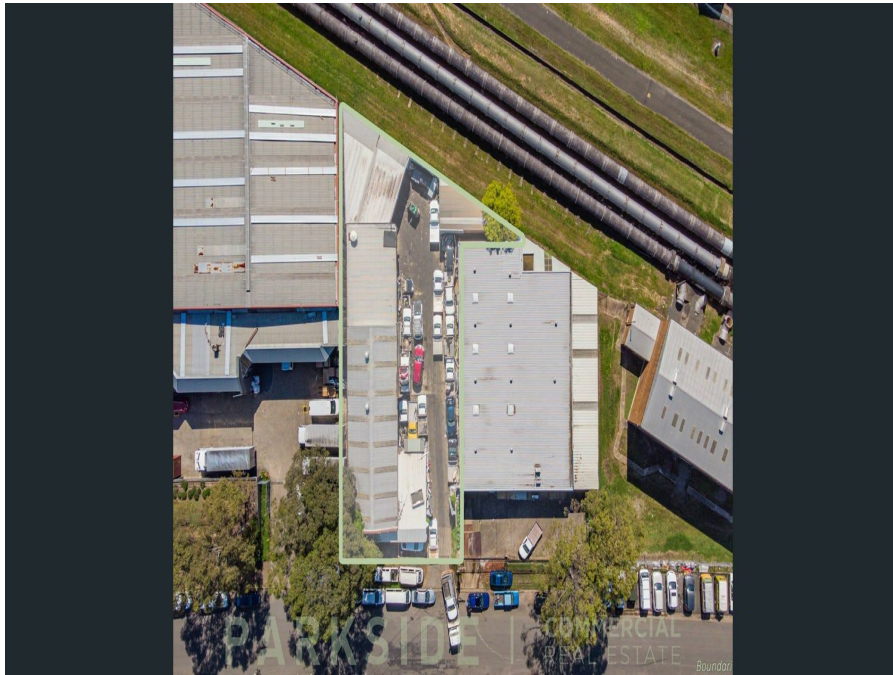


10 Bellona Ave, Regents Park, NSW 2143

Leased - \$140,000

Warehouse



Approved Auto Dismantling yard and Warehouse

C&A Real Estate is pleased to offer for lease this approved dismantling yard with a combination of open yard, warehouse and office.

Open for Inspection

By Appointment.

10 Bellona Ave, Regents Park is strategically located approx. 500m from Regents Park Train Station and within a short drive to Woodville Road & Hume Highway and major arterial roads .

With a total land size of 1108 sqm approximately and over 550 sqm of Building and covered awning area, the property lends itself to a variety of use

10 Bellona Ave, Regents Park offers the following benefits to your business:

- * A combination of warehouse, office, hardstand, sheds & awnings.
- * Approved motor vehicle dismantling site.
- * Front office area which is partitioned, air-conditioned & carpeted.
- * Ample hardstand yard area suitable for a wide range of users.
- * Secured yard with General Industrial zoning

Listed By

Gihad Chami
Phone: (02) 8030 5660
Mobile: 0405 125 588

