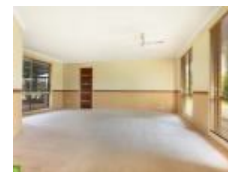


1 Windermere Ave, Albion Park, NSW 2527

Sold - 30/01/2012

House 4  2  2 



## Family Home

Affordable four bedroom home with ensuite and walk in robe. Double garage with internal access. Separate lounge, dining and family room. Pergola entertainment area with level spacious yard. Short walk to park and shops.

**Open for Inspection**

By Appointment.

### Listed By

Ben Linnehan

Phone: (02) 4257 0500

Mobile: 0414 563 113

