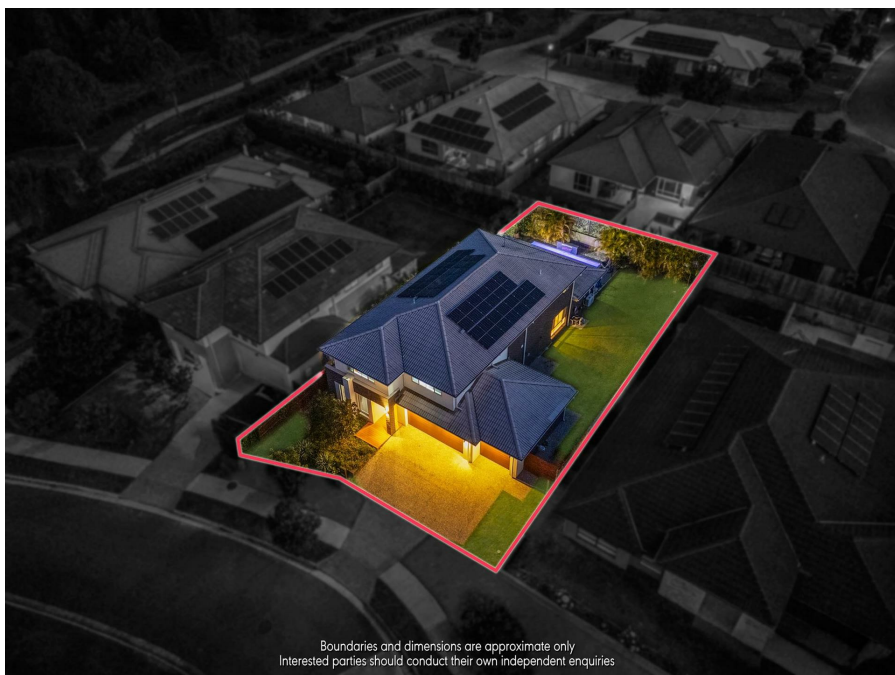


1 Litchfield Lane, Pimpama, QLD 4209

Sold - 3/12/2025

House 5 3 3



EXPANSIVE MODERN FAMILY HAVEN WITH SUPERB OUTDOOR ENTERTAINING

Positioned within a favoured family community, this expansive double-storey residence delivers an impressive blend of space, style and lifestyle. Offering a sprawling layout with multiple living and dining options, it caters effortlessly to busy families and entertainers alike. Outside, a fabulous alfresco retreat takes centre stage, boasting covered entertaining zones, a sparkling swimming pool and a large backyard, while the home's prime location places schools, shops and everyday amenities just minutes away!

Open for Inspection

By Appointment.

Timber-styled flooring and a soft neutral palette create a timeless backdrop for the expansive interior, with a multi-zoned layout perfectly suited to evolving family needs. Open-plan family and dining occupy the lower level, complemented by a plush media room and carpeted living room, while upstairs a generous rumpus provides an additional retreat. The kitchen impresses in both style and function, boasting abundant storage with a walk-in pantry, quality appliances, gas cooking and sleek stone benches centred around a large island.

Corner sliders open to an inviting outdoor entertaining zone with the covered and tiled patio perfect for relaxation. There is the ideal vantage over a sparkling in-ground swimming pool whilst a large fenced and flat yard provides superb space for children and pets to frolic!

Five built-in bedrooms are nestled privately on the upper level with a separate study downstairs offering options for a sixth if needed. Boasting dual walk-in wardrobes, the master bedroom also impresses with a private ensuite including a large dual-vanity whilst the family bathroom includes a separate bath. Additional features include a guest powder room, internal laundry, solar electricity and triple remote garaging.

Combining generous internal proportions with thoughtful design, this home provides exceptional space for daily family life and relaxed entertaining. Set in a quiet, leafy corner, it offers the perfect balance of tranquillity and convenience, with extensive shopping, dining, schools and transport options just minutes away!

- 616m2
- Expansive double-storey family residence in quiet leafy corner
- Sprawling layout with open-plan living and dining, separate carpeted media room, large plush living room and upstairs rumpus
- Modern kitchen with walk-in pantry, quality appliances, gas cooking and large stone island
- Covered and tiled alfresco entertaining overlooking sparkling in-ground pool with poolside lounging
- Large, flat, fenced yard ideal for children and pets

Listed By

Nicole Hintz
Phone: (07) 5549 4500
Mobile: 0403 895 705

Nicole Hintz
Phone: (07) 5549 4500
Mobile: 0403 895 705

