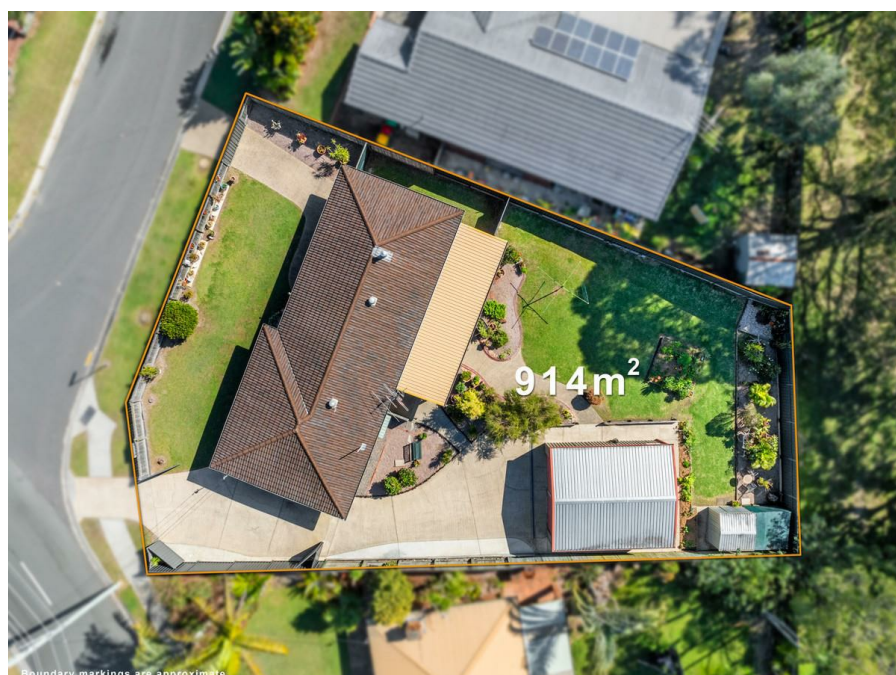


1 Jillian Ct, Capalaba, QLD 4157

Sold - 17/09/2024

House 4 1 1 2



Put A Smile on your Face!

Immaculate Home ½ Fantastic Location
Adjoins Picturesque Nature Reserve
Sought after ½ Maridale Park ½ Precinct
Massive 914sqm Allotment
First Time Offered in 36 years
Brick & Tile ½ Fiteni ½ Built Home
4 Bedroom Lowset Home
Sparkling Kitchen ½ Outlook to Yard
Gas Cook Top and Oven
Spacious Open Plan Lounge & Dining Area
Split System Air to Living Area
Wood Fireplace for those Cold Nights
Full Length North Facing Entertainment Area
Plenty of Private Yard for the Kids
Shady Established Landscaped Gardens
Tri-Steel Double Lock-up Garage - 7.5 x 6m
Full Concrete Driveway - 3.2m Side Access
2nd Side Access for Trailer/Tinny
Colorbond Fencing and Gates
Cost Saving Vege Garden & Chicken Coop
Handy Garden Shed
Inspections Welcome !!

350m ½ Maridale Park ½ Shopping Village
900m Coolnwynpin State Primary
1.7km Capalaba State College school catchment area.
1.8km St Lukes Catholic Primary
2.8km Capalaba Park Meier Shopping Centre

Listed By

The Office
Phone: (07) 3286 2500

Open for Inspection

By Appointment.

