



1/28 Kramer St, Larapinta, NT 0875

Sold - 4/10/2024

Duplex 3  1 



## Mango Mania

Low maintenance, lifestyle living at its best!

A commitment to hard work, love and attention to details has gone into perfecting this immaculate three-bedroom, freestanding duplex.

**Open for Inspection**

By Appointment.

The transformation of the front garden has been exciting to watch. A canopy of sculptured trees provides extra shade when entering from the carport.

Sit under the bullnose front verandah and enjoy the landscaped and low maintenance front garden while enjoying the uninterrupted views of the Macdonnell Ranges beyond.

The home has recently been painted inside and out which compliments the contemporary decor throughout. There are two separate living rooms, a front formal lounge with portrait views from the large front window and a second family room at the rear.

The designated dining area fits perfectly with the design while the brand new, standout gas kitchen has been a major improvement. Classic white back tiling, stainless steel cooktop, oven and rangehood add to the features. An island breakfast bar has been a worthy inclusion and the dishwasher lists among the conveniences.

The main bedroom is a generous size, has two-way access to the bathroom and again, beautiful front garden views. Two of the bedrooms have built-in robes, the third bedroom is a perfect size for an office or child's bedroom.

A sliding glass door from the family room leads to the full-length rear verandah and rear garden. There is an established fruit garden with a large fig tree, passionfruit, citrus and the most amazing, fruiting mango tree in town!!

Don't be disappointed, view soon!

- Council Rates \$2,050.65
- Courtyard block 510 sq metres
- Three bedroom, one bathroom duplex

### Listed By

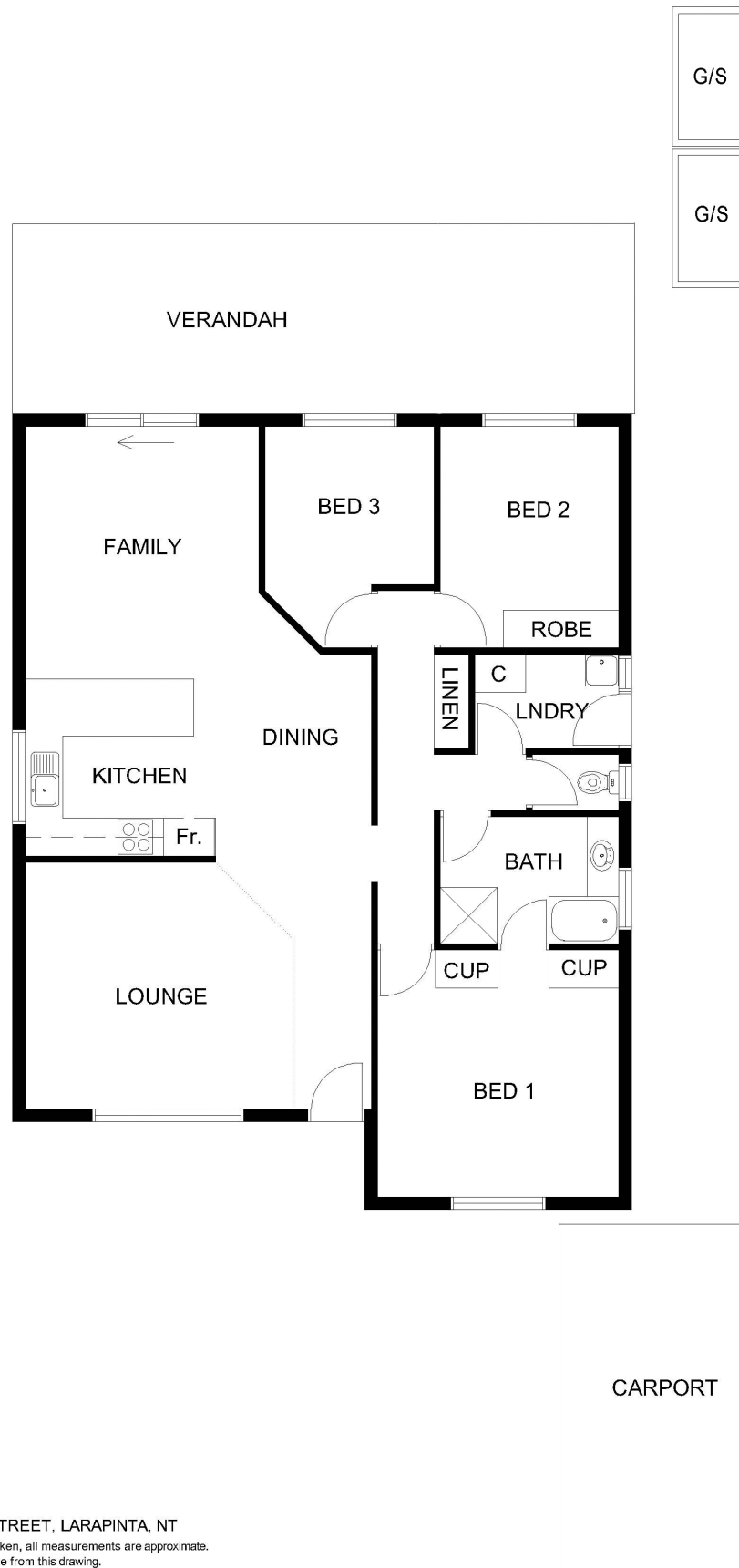
Gail Tuxworth

Phone: (08) 8950 6333

Mobile: 0418 897 009



## Floorplan



1/28 KRAMER STREET, LARAPINTA, NT  
Whilst all due care is taken, all measurements are approximate.  
Do not measure or scale from this drawing.  
Total building area including external walls: 115.0m<sup>2</sup> approx.