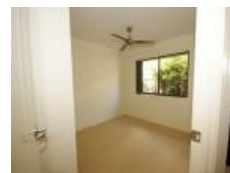


1/16 Hazel St, Pimpama, QLD 4209

Leased - \$600

House 3  2  1 



Delightful 3 bedroom Duplex

**** IF YOU DO NOT REGISTER FOR YOUR PRIVATE APPOINTMENT, YOU WILL NOT BE PERMITTED TO ENTER ****

This delightfully presented home is perfectly designed to accommodate a busy lifestyle and is in close proximity to Pimpama Junction, schools and childcare facilities.

Open for Inspection

By Appointment.

The features of the property include:

- 3 carpeted bedrooms, all with built-ins and ceiling fans
- 2 bathrooms, ensuite in main bedroom with large shower cubicle and shower/bath in - main bathroom
- Tiled open plan family room with air conditioner and ceiling fan
- Open plan kitchen with stainless steel appliances including dishwasher
- Tucked away laundry nook
- Fly screens and blinds throughout
- Alfresco dining
- Single automatic lock up garage with internal access
- Fully fenced low maintenance yard

**** ARRANGE AN INSPECTION TIME ONLINE****

**** REGISTRATION REQUIRED ****

By registering, you will be INSTANTLY informed of any updates, changes or cancellations for your appointment. Please be aware that even though you may be booked in for an inspection, it does sometimes occur that the property may be leased prior to the time and date you have been given. If that occurs, you will receive a text informing you of the cancellation. Once registered, you will receive an email from our agency as to the guidelines of entry. Please ensure you read them and adhere to them strictly. Please view the photos and any visual aids you can access thoroughly to ensure that this is a home you are very interested in before registering. Due to the current situation, open homes are attendance limited, if you are unable to register for an inspection, register your interest and you will be notified when/if another open is scheduled.

**** IF YOU DO NOT REGISTER FOR YOUR PRIVATE APPOINTMENT, YOU WILL NOT BE PERMITTED TO ENTER ****

Listed By

Richard Graves

Phone: (07) 5585 7888

Mobile: 0431 409 134

