

1/15 Shearwater Dr, Taylors Beach, NSW 2316

Please Call

Warehouse



Industrial Unit located in the lively Shearwater Business Es

Industrial Unit located in the lively Shearwater Business Estate

- 76 sqm approx plus mezzanine area
- Secured and gated complex
- High clearance roller door
- Full internal amenities
- Air Conditioning
- Parking facilities
- Rental Appraisal: \$19,500 + GST + outgoings per annum

Open for Inspection

By Appointment.

This commercial unit is situated in a strategic location near the Home Makers Centre and within the busiest business park in Port Stephens

Offering a variety of opportunities with shed storage, open plan work shop options plus the additional mezzanine space with carpeted office/rooms with air conditioning.

Ease of access with a high clearance roller door and reception/shop style fit out with the options for personalisation

3 phase power offering ample capacity for industrial and commercial machinery

Well suited for any small business, tradie and storage requirements.

All information contained herein is gathered from sources we consider to be reliable. However, we cannot guarantee or give any warranty about the information provided. Interested parties must solely rely on their own enquiries.

Listed By

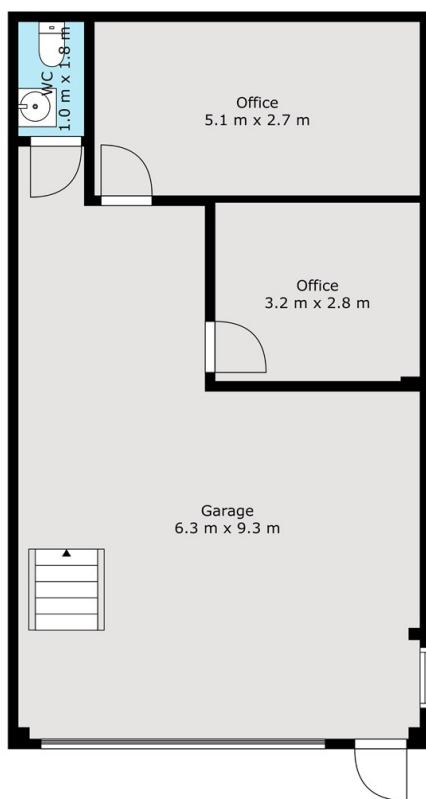
Jason Brennan
Phone: (02) 4984 2400
Mobile: 0419 691 377

Sally Edwards

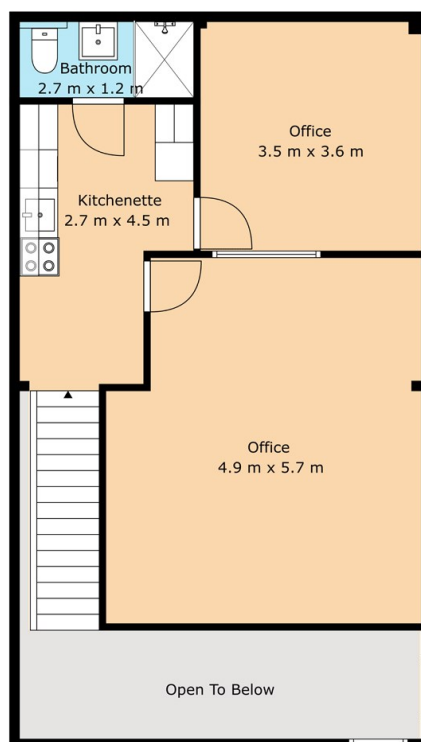


Floorplan

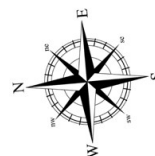
1/15 Shearwater Drive, Taylors Beach



Floor 1 / WORKSHOP



Floor 2 MEZZANINE LEVEL



TOTAL: 84 m²
FLOOR 1: 25 m², FLOOR 2: 59 m²
EXCLUDED AREAS: GARAGE: 44 m², OPEN TO BELOW: 11 m², WALLS: 13 m²

ALL SIZES, DIMENSIONS & ELEMENTS ARE APPROXIMATE & INTENDED FOR VIEWING PURPOSES ONLY
© 2025 Rite Angle Media - All rights reserved
www.riteanglemedia.com.au

LJ Hooker
Nelson Bay