

1/10-14 Belmont St, Sutherland, NSW 2232

\$1,100,000

Villa 2 1 1 1



Unique Street-Front Villa – Virtually Freestanding !

Set amidst beautifully maintained gardens, this charming villa captures the essence of relaxed Sutherland living - they simply don't build them like this anymore!

Step through the welcoming ranch-style entry into a haven of comfort and character.

The modern kitchen with a central island bench forms the heart of the home, flowing effortlessly into an open plan living and dining area bathed in both morning and afternoon sunlight. Enjoy a bright, leafy outlook from both bedrooms, while the window-ventilated bathroom and separate WC add everyday practicality. Outside, a private courtyard offers the perfect spot for morning coffee or weekend entertaining, with the convenience of direct access to the garage. Positioned in a peaceful, well-kept complex, this villa combines timeless charm with easy modern living - all just moments from Sutherland's vibrant village cafes, parks, and transport.

Call Sham 0409 286 652 for a private viewing today!

Open for Inspection

By Appointment.

Property Features

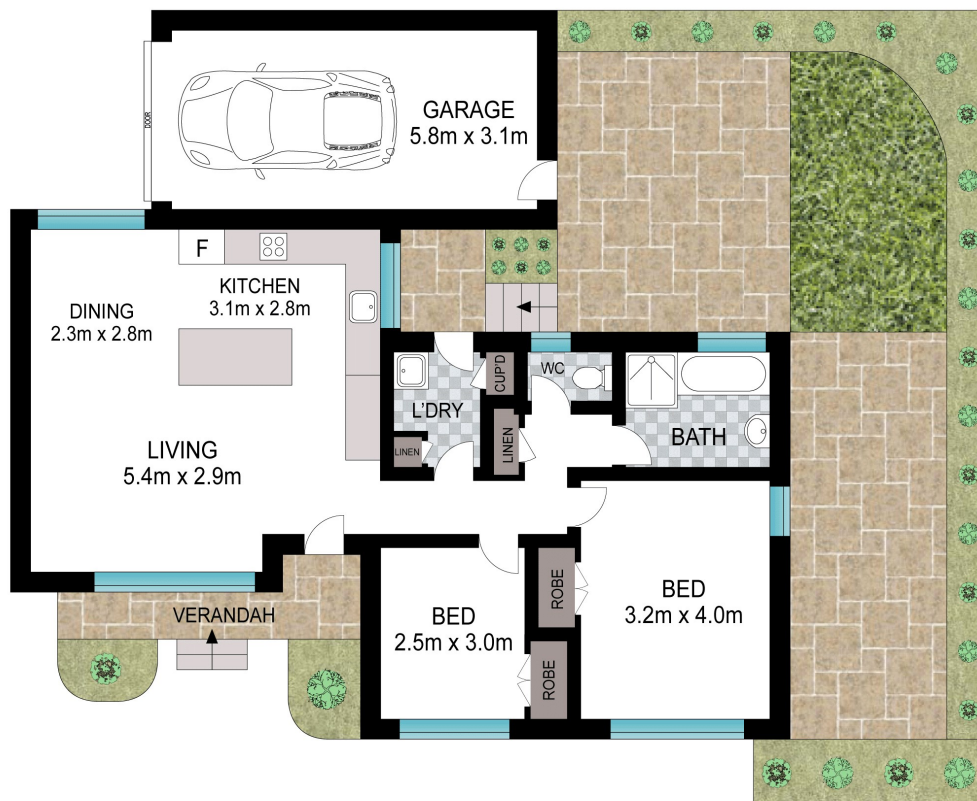
- Single level
- Street Front

Listed By
Sham Watkins

Mobile: 0409 286 652



Floorplan



Scale in metres. Indicative only. Dimensions are approximate. All information contained herein is gathered from sources we believe to be reliable. However, we cannot guarantee its accuracy and interested persons should rely on their own enquiries.



1/10-14 Belmont Street, Sutherland