




805/20 Nancarrow Ave, Meadowbank, NSW 2114

Leased - \$690 per Week

Apartment 1  1  1 



Don't miss out this Great Location!!!

Kingston Quarters at Shepherds Bay is built to the highest quality. This 1 bedroom + Study apartment with an overabundance of light offers remarkable comfort and modern convenience in the heart of Meadowbank. Its within walking distance to the Parramatta River, where you can enjoy the evening sunsets as you stroll along the foreshores, parks & walking paths & cycleways.

Features include:

Open-plan living with access to the balcony.

Gourmet kitchen with gas cook top, stone benchtops and premium appliances.

Some furniture included – 3-seater lounge, coffee table, kitchen counter top bench with tall bench chair, fridge, microwave, washing machine & dryer.

Bedroom has built-in wardrobe and opens directly to the balcony.

Modern bathroom

Ducted air-conditioning throughout.

Separate internal laundry with washing machine & dryer.

NBN connectivity

Security Building with security Intercom

Single car space & storage cage with Lift access.

Swimming pool, spa & BBQ facilities.

Location highlights:

Moments to waterfront parks and Meadowbank Ferry Wharf.

Short distance to Meadowbank Train station and buses.

Meadowbank TAFE and leading schools in the precinct.

Moments to supermarkets, cafes and restaurants.

Local markets on the 2nd & 4th of every month at the park by the Parramatta River.

Close proximity to Sydney Olympic Park, DFO, Sydney Flemington markets, Macquarie & only one stop to Rhodes Shopping centre.

Please register your interest via email to rosalind@samyakproperties.com

Open for Inspection

By Appointment.

Property Features

- 1 bedroom + study
- Some furniture included
- Open plan living, NBN Connectivity
- R/C air, Balcony, Internal Laundry
- Pool & BBQ facilities
- Security complex, Secure Parking & Storage

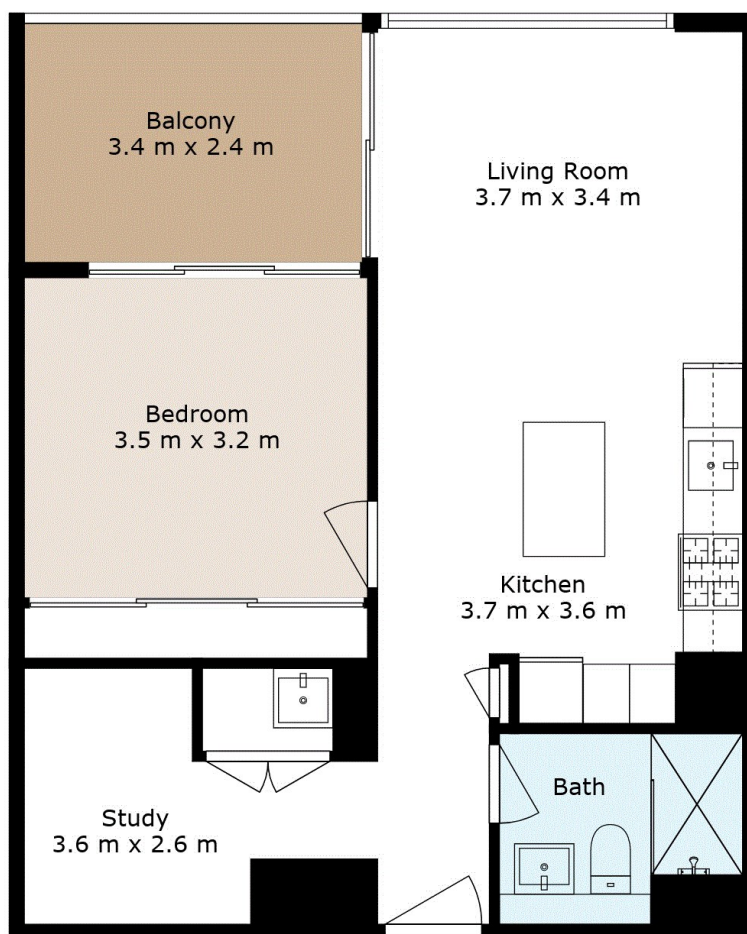
Listed By

Rosalind Oey

Mobile: 0419 694 172



Floorplan



GROSS INTERNAL AREA
FLOOR 1: 55 m²
EXCLUDED AREAS: BALCONY: 8 m²
TOTAL: 55 m²

This Floor Plan Was Prepared By www.cryingoutloud.com.au For Illustration Purposes Only. This Document Does Not Constitute Any Part Of An Offer Or Contract. Dimensions Are Approximate Only. Copyright © 2022 Crying Out Loud.

