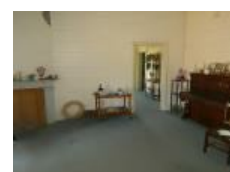


/19-25 Courallie St, Moree, NSW 2400

\$990,000

Acreage 2  1  2 



Greenbah acreage.

This unique Greenbah gem is as versatile as it is rare.

Covering 1.6ha and featuring a home and outbuildings from the from a bygone era, it is sure to appeal to the renovator looking for an oasis or the forward thinking developer who will quickly see the property's enormous potential.

The timber home features two large bedrooms, living and dining rooms, kitchen, laundry and bathroom as well as 2 original fireplaces. There is an enclosed verandah and office/third bedroom and an open verandah on three sides of the home. Located a stone's throw from the Mehi River and only a short walk to the golf club.

With its land size and location this is a unique property that will appeal to the visionary.

Open for Inspection

By Appointment.

Listed By

Anthony Sullivan
Phone: (02) 6752 1161
Mobile: 0400 621 928

